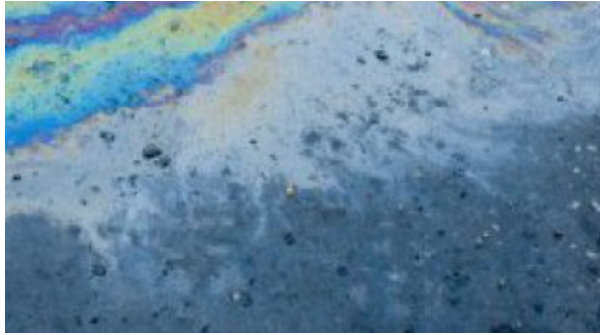




Town of Millis

STORMWATER MANAGEMENT



What is the issue?

Stormwater is rain and snowmelt that flows over rooftops, driveways, parking lots, and other hard surfaces that prevent water from soaking into the ground. Stormwater carries pollutants that harm lakes, streams, estuaries and other waterbodies. Mismanaged and illicit pollutants in stormwater can harm wildlife, cause flooding and erosion, and limit recreation in public spaces.



Business

How can you keep your business's yard clean and attractive? If you use fertilizers, make sure you or your groundskeeper or landscaper is reading the label and applying only the required amount. Some lawns don't need fertilizer at all.

Have excess grass clippings and leaf piles in the yard of your business?

- Collect and dispose of them properly.
- If you have a green thumb, use this waste as compost and feed your garden or lawn.



Industrial

Gas, oil, and grease from gas and repair stations can wash into storm drains and pollute our waters.

- Keep these fluids away from the street and drains.
- Be sure to take care of where your waste liquid is going.
- Keep your storm drains free from gasoline, oil, and car cleaning products.

Flip to see how residents can help keep stormwater clean →

How can residents help keep stormwater clean?



Proper yard maintenance

In the Spring, bag your grass clippings and bring them to the Transfer Station with the required sticker.

In the Fall, bring your leaves to the Transfer Station or compost them to make a natural fertilizer for your garden.

- Don't dump yard waste in a brook or storm drain.
- Do sweep up driveways, sidewalks, and walkways.



Pick up after your pet

No one likes stepping or swimming in dog poo. Pet waste contains bacteria and is high in nitrogen, so if it washes away with stormwater, it can damage fish habitats and pollute our waters.

When you walk your dog, always remember to:

- Bring your doggy bag.
- Throw waste in the trash or down the toilet - never in a storm drain.



Keep an eye on your septic

Have a septic system? Leaking septic systems release nutrients, bacteria, and viruses into stormwater. If your yard starts to smell, or lush plants start to grow, your septic system may need your attention. It could even back up into your home if you are not careful.

Properly maintain your system; inspect it every 3 years and pump your tank as necessary (every 3-5 years).



Keep it natural

According to experts, most homeowners over-fertilize their lawns. If you use too much fertilizer, the excess will just wash away in the next rain, polluting our waters.

- Use fertilizers sparingly.
- Test soil and read label before applying fertilizer.
- Use an organic, long-lasting fertilizer in the Fall and corn gluten, a pre-emergent weed control and fertilizer, in early Spring.



Barrel it up

Want to collect water for your plants and minimize stormwater runoff? Rain barrels are your best bet.

Connect gutters to water tanks, and use the stormwater from your rooftop to water your lawn and garden when the weather gets dry. A full rain barrel will contain enough water to care for a 200-square-foot garden.

A rain barrel is a great way to conserve water and reduce the amount of water that runs off your land.



Drive to the car wash

Take your car to a commercial car wash rather than washing your car in your driveway. Not only do the dirt and grime cause buildup issues in public drains, but detergents used in cleaning can create water quality problems. Commercial car washes have special equipment to deal with this leftover water so you don't have to.

If you wash your car at home, avoid using excess detergents or chemicals, and wash the car in your yard so water seeps into the ground.

Questions? Comments?

Contact: **Jim McKay**

Department of Public Works Director



www.millisma.gov/public-works-highway-department



jmckay@millisma.gov



508-376-5424