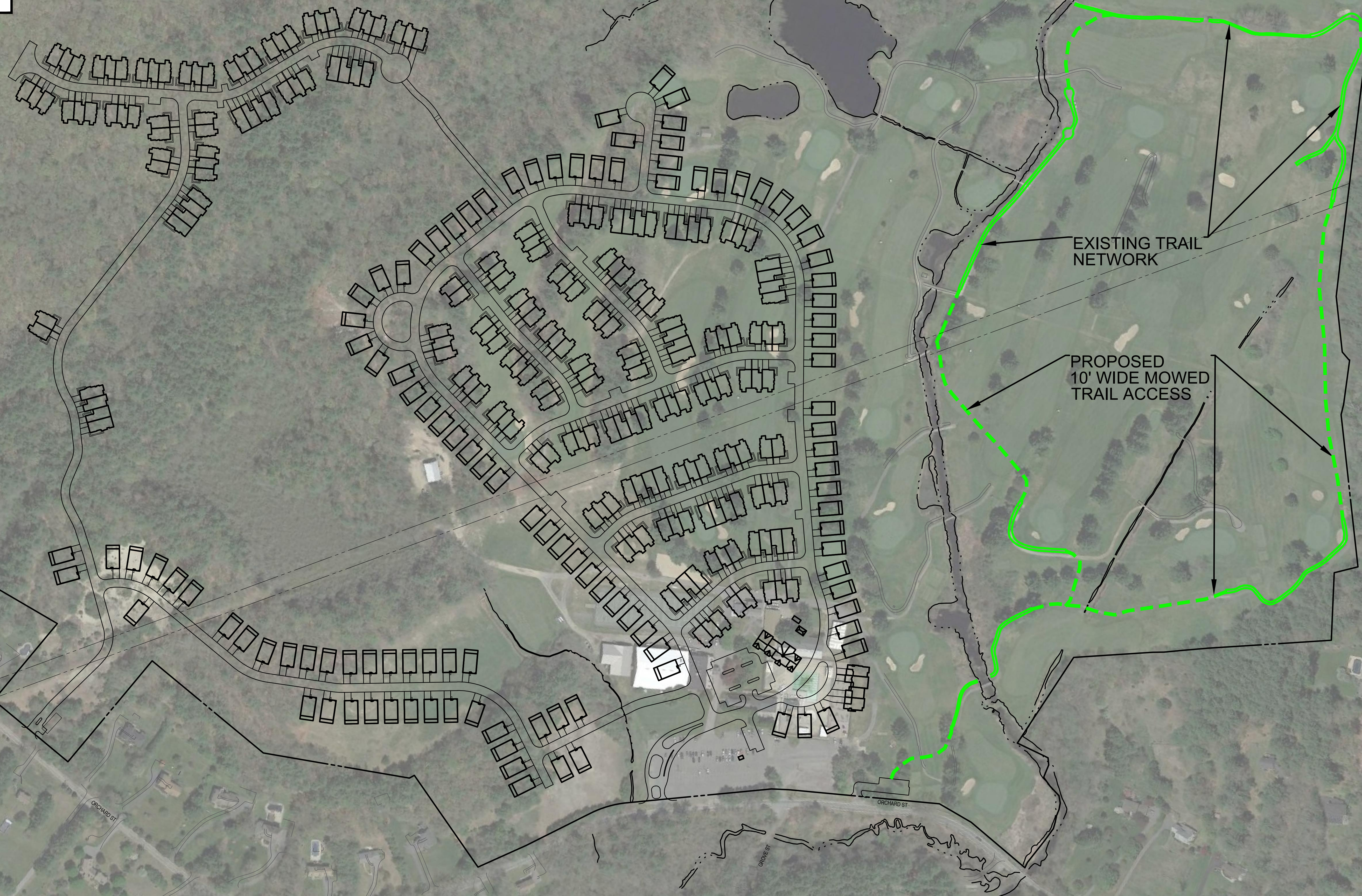


FOXWOOD COVE



BOHLER ENGINEERING

SITE PLANNING • LANDSCAPE ARCHITECTURE
 LAND SURVEYING • PROGRAM MANAGEMENT • TRANSPORTATION SERVICES
 SUSTAINABLE DESIGN • PERMITTING SERVICES

PHILADELPHIA, PA • NORTHERN VIRGINIA
 PHOENIX, AZ • RICHMOND, VA
 RESTON, VA • SOUTH EASTERN, PA
 RICHMOND BEACH, DE • CHARLOTTE, NC
 NEW YORK, NY • WASHINGTON, DC
 NEW JERSEY • SOUTHERN MARYLAND
 SOUTH FLORIDA

THE INFORMATION CONTAINED ON THIS PLAN AND INSTRUMENT IS BASED ON THE RECORDS OF THE PUBLIC RECORDS AND SURVEY DATA PROVIDED BY THE CLIENT. BOHLER ENGINEERING, INC. ACCEPTS NO LIABILITY FOR ANY ERRORS OR OMISSIONS IN THIS INFORMATION. © 2017 BOHLER ENGINEERING, INC.

REVISIONS

REV	DATE	COMMENT	BY
1			
2			
3			
4			
5			
6			
7			
8			
9			
10			
11			
12			
13			
14			
15			

PRELIMINARY

PROJECT No.: W161041
 DRAWN BY: MMA
 CHECKED BY: APT
 DATE: 02/28/2017
 SCALE: AS NOTED
 CAD I.D.: W161041

PROJECT: **SITE DEVELOPMENT PLANS** FOR

Toll Brothers

LOCATION OF SITE
 MAP# 01, LOTS# 1-4, 6
 MAP# 05, LOT# 35
 WALNUT STREET
 TOWN OF MILLIS
 NORFOLK COUNTY,
 MASSACHUSETTS

BOHLER ENGINEERING

352 TURNPIKE ROAD
 SOUTHBOROUGH, MA 01772
 Phone: (508) 480-9900
 Fax: (508) 480-9080
www.BohlerEngineering.com

W.D. GOEBEL

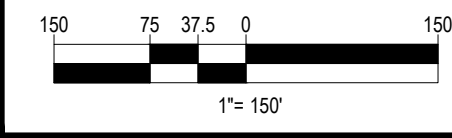
PROFESSIONAL ENGINEER

MASSACHUSETTS LICENSE No. 42644
 RHODE ISLAND LICENSE No. 7268
 CONNECTICUT LICENSE No. 21854
 NEW HAMPSHIRE LICENSE No. 10290
 MAINE LICENSE No. 9490
 NEW YORK LICENSE No. 07584-1
 FLORIDA LICENSE No. 66202

SHEET TITLE: **OPEN SPACE TRAIL EXHIBIT**

SHEET NUMBER: **1** OF 1

REV 0 - 02/28/2017



P:\161041\Drawings\Exhibits\2017_04_28 - Millis, Bland Open Space Trail Locations.dwg, Layout1, 10/9/2014, 4:28:09 PM, anandling.dwg, To PDF, pc3, ARCH Full Size E1 (30.00 x 42.00 inches), 1:100