

FY21 Paving Recommendations

Available Funds FY21 (July 01, 2020):	\$470,840.45
Outstanding project balance (7/8/16):	<u>\$1,497.61</u>
	<u>\$469,342.84</u>

	Projected Cost	
Item #1		
Island Road	\$100,205.00	Reclaim 775 feet of Roadway replace with 2.5" of binder and top with 1.5" of top bituminous concrete. from Exchange Street Timberline Road
Item #2		
Union Street	\$103,205.00	Mill 1,150 feet of Roadway replace with 1.5" of top bituminous concrete. from Pollard Drive to Rosenfield Road
Item #3		
Farm Street	\$92,525.00	Mill 1,055 feet of Roadway replace with 1.5" of top bituminous concrete. from Alma Road to 130 Farm Street
Item #4		
Oakview Ave	\$73,297.00	Mill 825 feet of Roadway replace with 1.5" of top bituminous concrete. from Exchange Street to Union Street
Police Details	<u>\$12,000.00</u>	
Total =	\$381,232.00	
FY21 Chapter 90	<u>\$469,342.84</u>	3,805 feet of new paved Roadway.
Balance =	<u>\$88,110.84</u>	



Island Road

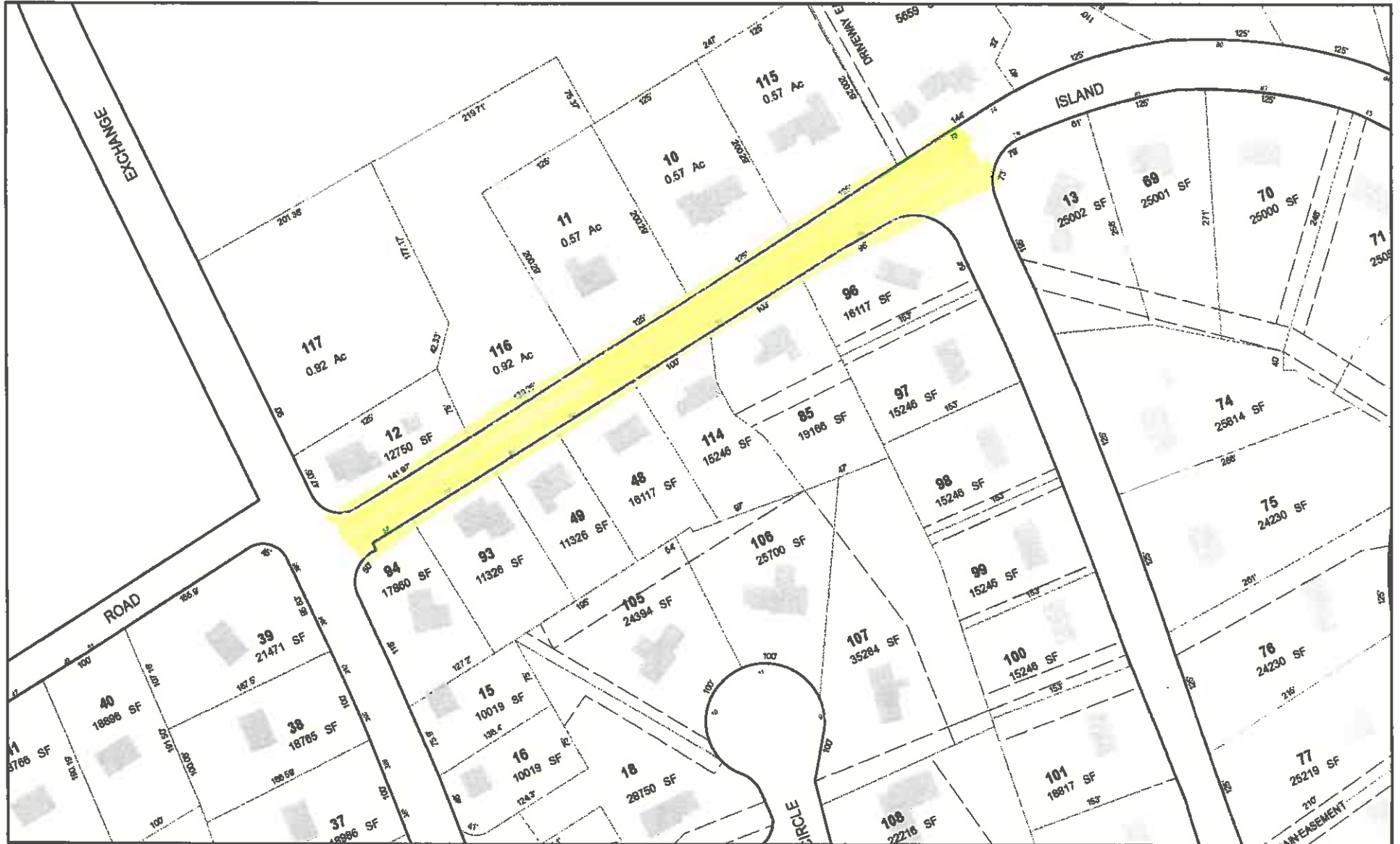
Millis, MA



1 inch = 139 Feet



July 7, 2020



Data shown on this map is provided for planning and informational purposes only. The municipality and CAI Technologies are not responsible for any use for other purposes or misuse or misrepresentation of this map.



Union Street

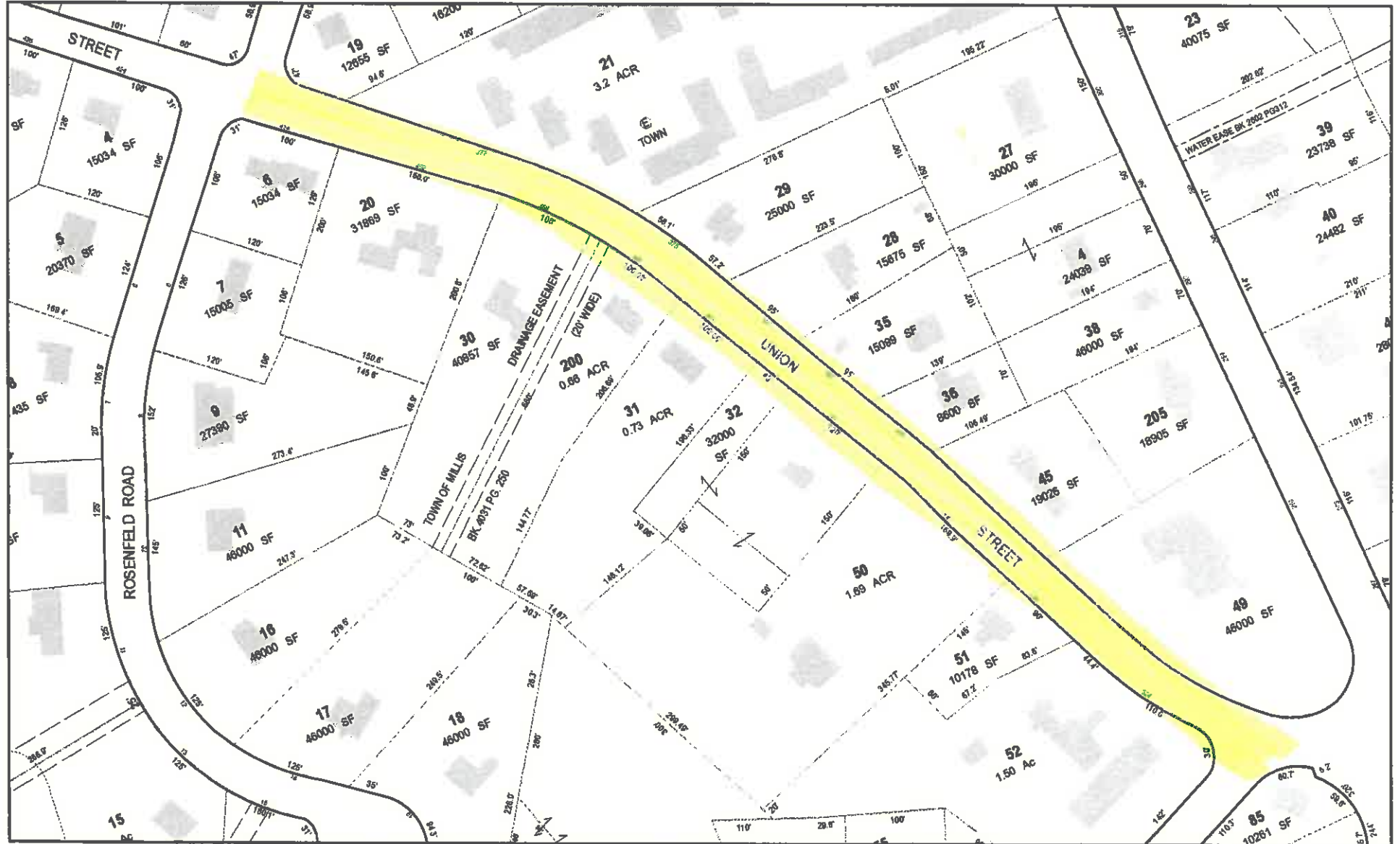
Millis, MA



1 inch = 139 Feet



July 7, 2020



Data shown on this map is provided for planning and informational purposes only. The municipality and CAI Technologies are not responsible for any use for other purposes or misuse or misrepresentation of this map.



Farm Street

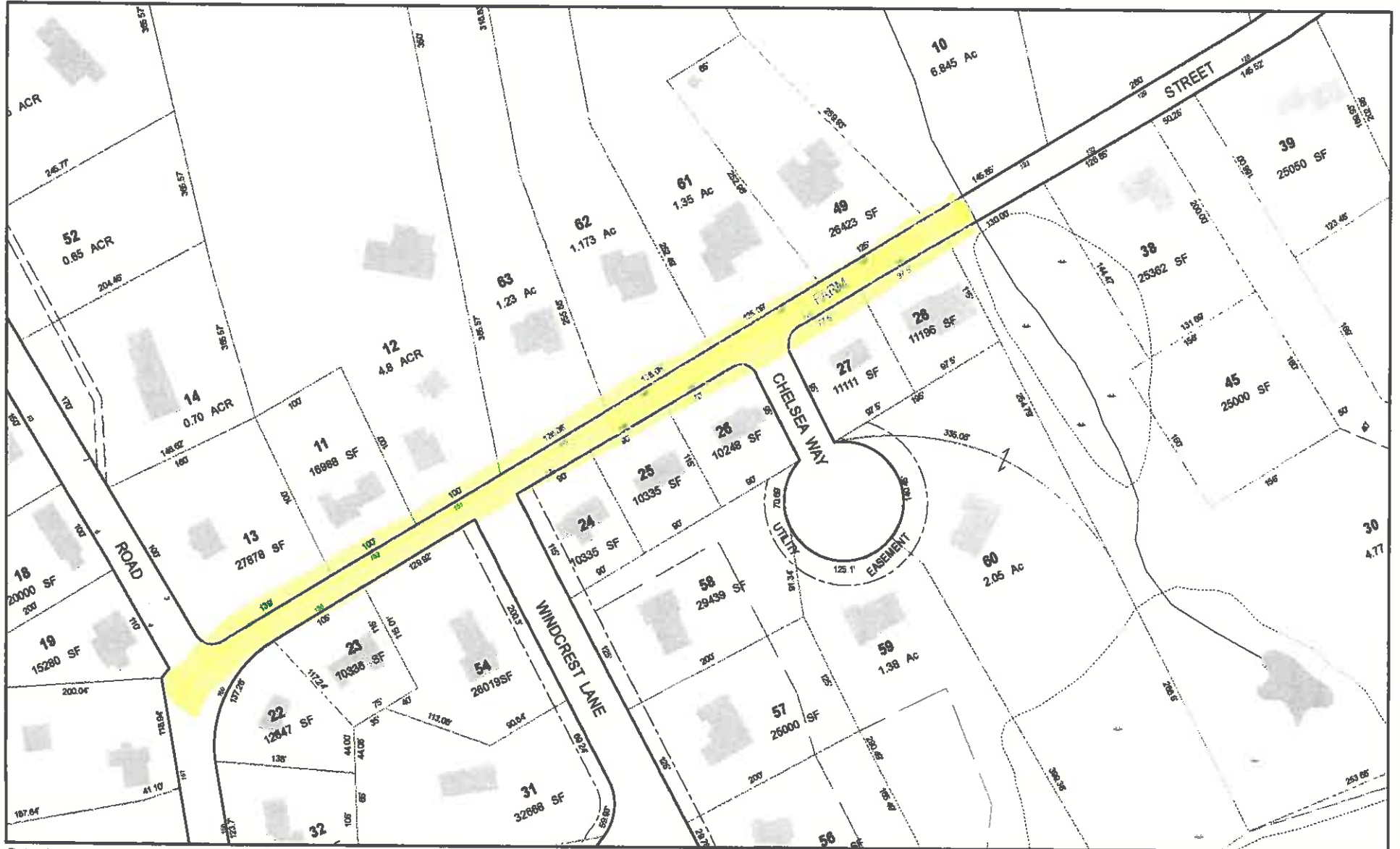
Millis, MA



1 inch = 139 Feet



July 7, 2020



Data shown on this map is provided for planning and informational purposes only. The municipality and CAI Technologies are not responsible for any use for other purposes or misuse or misrepresentation of this map.



OakView Ave

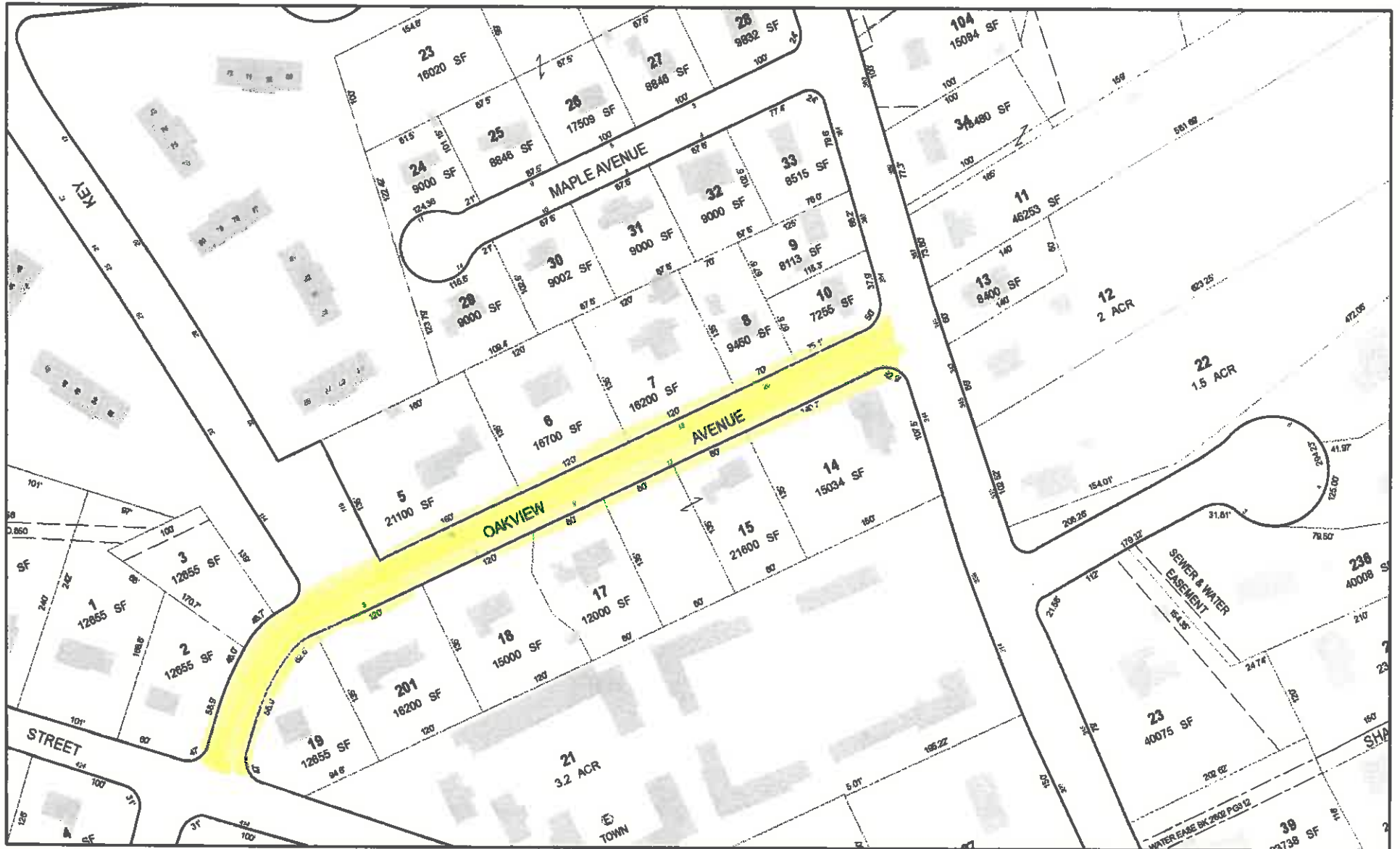
Millis, MA



1 inch = 139 Feet



July 7, 2020



Data shown on this map is provided for planning and informational purposes only. The municipality and CAI Technologies are not responsible for any use for other purposes or misuse or misrepresentation of this map.